

C-LAB EDITORS

POLYFRAME

UNIVERSAL MODULAR LIBRARY & EDITOR FOR THE ATARI ST SERIES

© 1991 Michael Haydn, Gerhard Lengeling

The age of the synthesiser has revolutionised the world of sound creation. Countless instruments all using different data structures open up all sorts of new horizons. The range of sound libraries keeps growing. The demands made of musicians and sound designers keep increasing. Hence the urgent need for an integrated software concept.

From the user's point of view, this raises a number of questions:

Despite all the different types of synthesis, is it possible for an editor program to provide a uniform display concept that caters for all the different types of synthesis, yet still allows quick and easy access? Can this software offer both dedicated editors, and the ability for the user to design his/her own personal parameters? Is the computer, in its role as controller of sequences, sounds, effect settings and more, also able to simultaneously process and store the data of MIDI instruments in universal libraries? Can such a system's operation and structure stand the test of time, even though new MIDI products are always appearing?

The answer to all these questions is POLYFRAME.

POLYFRAME is a universal and flexible MIDI management system which brings together the manipulation and editing of different instruments' data within a single, integrated, program concept. Dedicated, down-loadable Modules offer the best way of controlling the particular characteristics of the various types of synthesis. The number of Modules that can be simultaneously active is limited only by the computer's memory capacity. Even a single megabyte computer can contain several Modules.

These Modules can do all that conventional editor programs do, and give an exact visual representation of the respective device's memory structure. Some Modules simultaneously support more than one type of synthesiser. And because Module design is uniform, it is easy to transfer what

you have learned from Module to Module. The UNIVERSAL MODULE allows almost unlimited editing of any type of MIDI device thanks to its user-configuration possibilities, from single „dump utilities“ through to the most complex editing.

User Interface

Thanks to the latest programming methods, POLYFRAME offers unusually high processing speeds and the best possible user-friendliness. Each one of POLYFRAME has a separate window (such as for sound editing and storing). Each window has its own menus and sub-menus, and behaves as if it were a program in its own right. Almost any number of windows can be open simultaneously. They are simultaneously active and can be moved around the screen

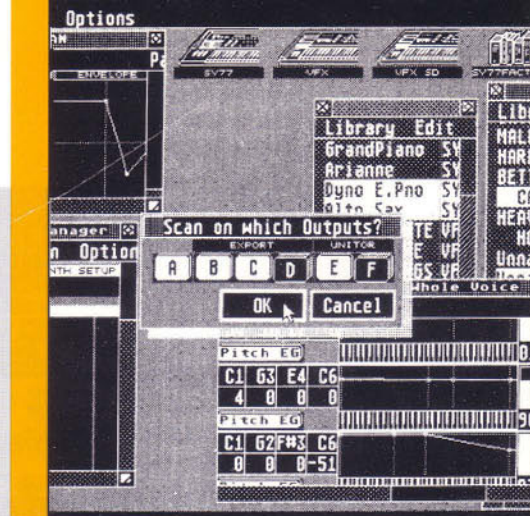
spectacularly quickly as no screen-redrawing needs to take place. Their position, size and section are all user-determinable. Up to 30 screen configurations can be saved and recalled at the stroke of a key.

Libraries

POLYFRAME's universal libraries are a new concept in data management which allow the integrated archiving of different types of data.

Any number of libraries can be installed, whose sizes are limited only by the computer's memory capacity.

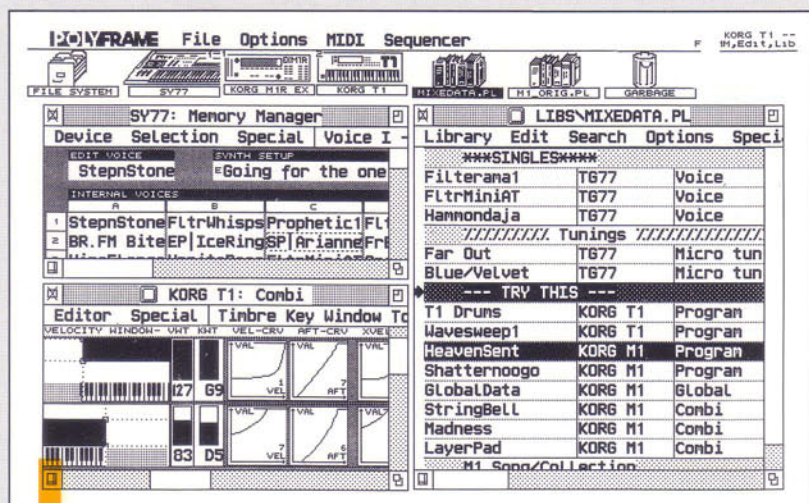
Each library can simultaneously contain different types of data groups, such as sound and performance data, including those of different synthesisers. Using all kinds of high-speed search and sort routines, data can be manipulated according to name, device, data type or other criteria. Alternatively, POLYFRAME allows many small libraries to be created, each one dedicated to a particular purpose such as live/studio-setups. Special convertor programs are provided which convert the data of „foreign“ data formats into the POLYFRAME library format.



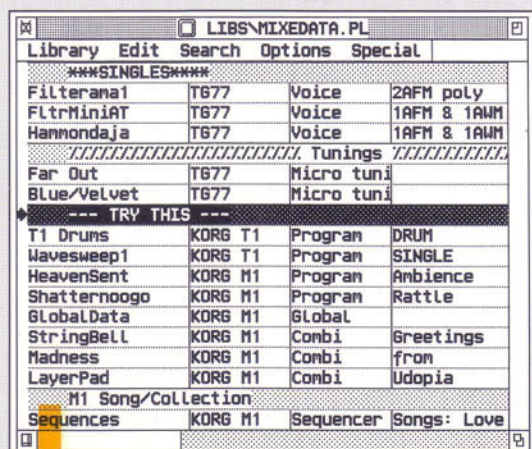
PolyFrame Windows ...



... are incredibly quick



MEMORY MANAGER, EDITOR AND LIBRARY WINDOWS

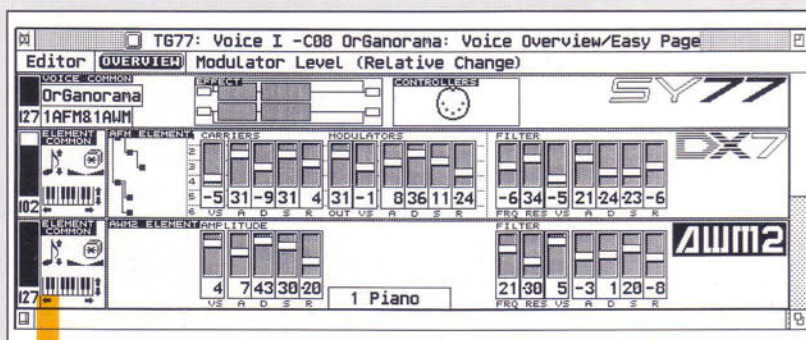


UNIVERSAL LIBRARY

Overview/Easy Page

The OVERVIEW page gives a bird's eye view over all the editing areas and allows targetted access to the detailed editing parameters.

The EASY PAGE makes complex editing easy. Whole groups of parameters at a time can be edited using the on-screen graphic editing elements. Depending on the MIDI device, you will find volume faders, velocity sensitivity faders etc. as well as easy-to-see ADSR envelope faders.

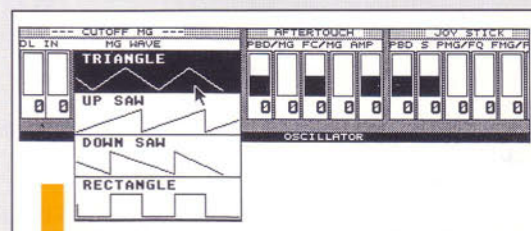


TG 77 OVERVIEW / EASY PAGE

Editing "street maps"

Every parameter forms part of a large editing surface that could be seen as the „street map“ to the device's structure. The diagrammatic display means being in complete control. All the graphic parameter elements can be intuitively mouse-manipulated

for optimum creativity. New flip-menus allow the targetted choice of eg. samples, waveforms etc. All parameter groups such as envelopes or effects functions can be copied wholesale by dragging with the mouse, even between several open windows.



EDITOR "STREET MAP": FLIP-MENU SELECTION

Multitasking: active audio monitoring

Unique MIDI Thru functions together with the built-in sequencer allow you to hear the results of the editing at every step. Sequences (even those of CREATOR/NOTATOR) can be saved/loaded. This helps when searching for suitable sounds in a library. Sound editing can also take place within a musical context. New Softlink Level 3 functions make tasks, such as editing the bowing part of a string sound, very easy due to the automatic

playback of the complete sequence. All editing can take place while the music is playing and is immediately heard.

System management

The possibility of freely configuring Modules, libraries, windows, MIDI and other system settings allow the user surface to be tailor-made to the user's needs. Individual layouts are saveable and loadable. The DEVICE SCAN function recognises devices that are connected. The memory contents of a device can be auto-requested on starting the program. Many auto-save functions ensure that the POLYFRAME desktop is loaded exactly as you saved it.

Perspectives

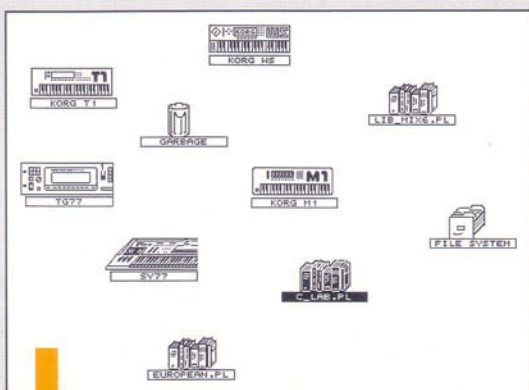
The advantages of the POLYFRAME concept are evident beyond the day-to-day work experience. Because POLYFRAME contains all the data-editing and managing functions that you would expect of a „software mainframe“ approach, the simple operating commands are easily transferred

to future projects (eg. other POLYFRAME Modules). Due to the innovative program structure, development leadtimes for new Modules are much reduced, so that new devices, and more of them, can be more quickly supported. This is how POLYFRAME will always remain up-to-date.

- AUTO SEND: transmits data during editing
- GEM and SOFTLINK compatible
- SOFTLINK Level 3: automatic playback of CREATOR/NOTATOR sequences

Libraries

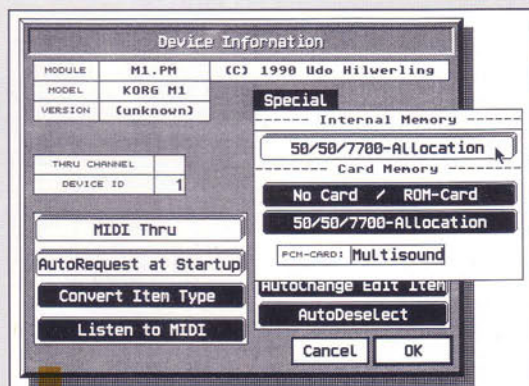
- any number and size of libraries allowed
- all libraries share a uniform data format
- POLYFRAME libraries can contain any mixture of sounds, performance data etc, whatever the MIDI device
- comprehensive search/sort and other routines
- display of data type, device model, commentary, date, time
- deletion of name-twins, data-twins or entries of similar data
- easy copy and move operations



POLYFRAME ICONS

POLYFRAME features

- down-loadable Modules
- individual Modules can support several same-type devices
- user-defined editing of any MIDI device using the UNIVERSAL MODULE
- DEVICE SCAN: automatic recognition of all connected devices
- complete graphic representation of the device's memory structure in the MEMORY MANAGER
- comprehensive copy, swap and select routines
- creation of auto-loading files for setups, sequences and configurations
- auto-saving of data on quitting
- TILE WINDOWS: window layout can be horizontal, vertical or automatic
- windows have their own local-menus and sub-menus



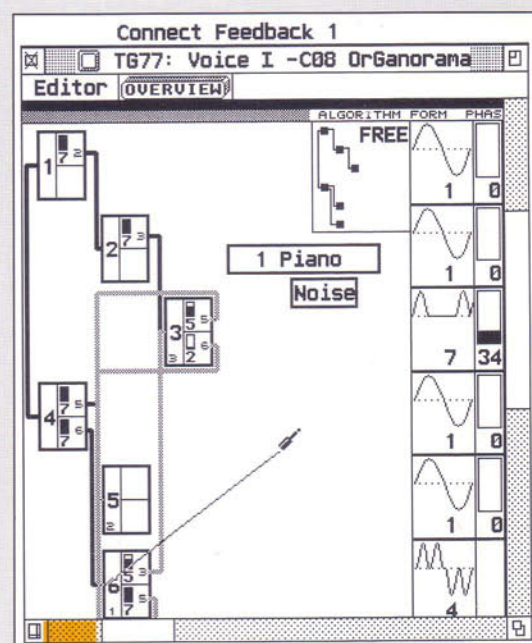
DEVICE INFORMATION BOX: SWITCHES AND MENUS FOR IMPORTANT SYSTEM SETTINGS

- use of flip-menus means quick selection of parameters
- many key commands for enhanced efficiency
- built-in mini-sequencer with auto-playback on selection of entries

Editors

- any number, size and layout of windows allowed
- OVERVIEW: graphic macro-display of all editing functions
- EASY PAGE: immediate one-stop editing of complex routines
- large-scale editor „street map“ containing every parameter with graphic detail of envelopes, waveforms, etc.
- direct selection of the desired editing region via Overview

- MIDI monitoring: changes made at the device are seen on-screen PM-SY



FREE ALGORITHM EDIT IN THE PM-SY

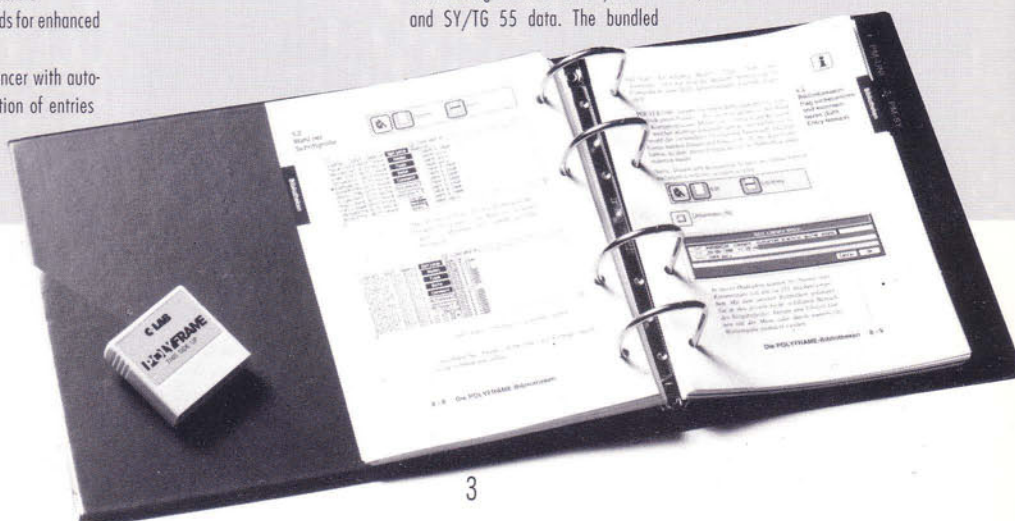
PM-SY

POLYFRAME MODULE FOR THE YAMAHA SY/TG 77

© 1991 Michael Haydn

This Module allows the editing and data management of all SY/TG 77 and SY/TG 55 data. The bundled

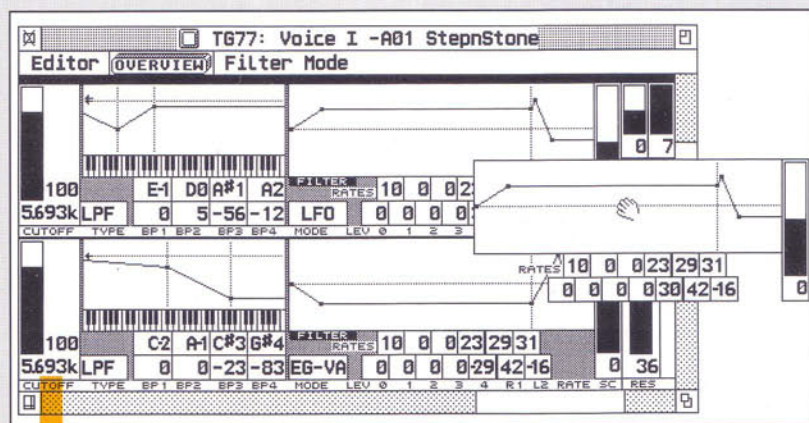
converter program converts all DX/TX 7, DX 7 II and TX 802 data into the



POLYFRAME format. X-Alyzer and certain „foreign“ library files can be imported.

PM-SY features

- memory management and individual editors for all internal and preset voice, multi, micro tuning, pan, synth and sequencer setup data
- setup-exchange possible between SY 77 and TG 77
- efficient operation of most important modulator, carrier and filter parameters using EASY PAGE's ASDR envelopes
- FILTER LINK: simple linkage to the 24dB or bandpass filters
- display of up to 4 elements in a window
- graphic display and editing of the algorithm; creation of freely-defined algorithms via FREE ALGORITHM EDIT
- easy copying operations, eg, element copy
- AUTO LOCAL OFF: automatic separation of keyboard and tone generator on boot-up
- voice-editing, even in multi mode
- graphic display of effects connections



COPYING THE FILTER ENVELOPES IN THE VOICE EDITOR

PM-M

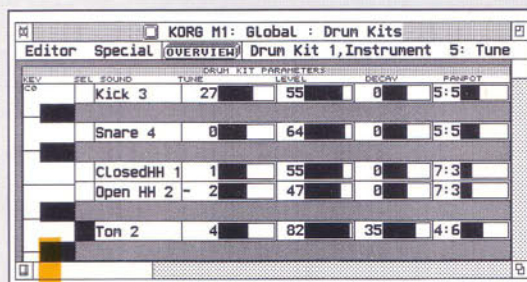
POLYFRAME MODULE FOR THE KORG M1, M1 R, M1 R-EX

© 1991 Udo Hilwerling

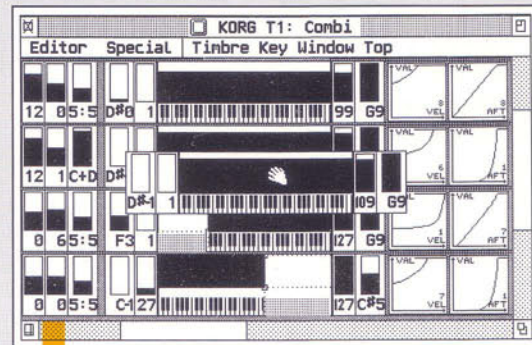
This Module allows the editing and data management of all Korg M1, M1 R and M1 R-EX data. The convertor program that comes with the Module converts EXPLORER M1 libraries and M1 mode files into the POLYFRAME format.

PM-M features

- memory management and individual editors for all internal and card Programs, Combis, Global, Drumkit and Sequencer data
- additional conversion of EX samples, plus exchange of T-series Programs and Combis
- automatic request of card data on boot-up
- easy editing of VDF and VDA envelopes vis EASY PAGE parameters



PM-DRUM EDITOR



PM-T COMBINATION EDITOR: FAST COPYING OF KEY WINDOWS

PM-T

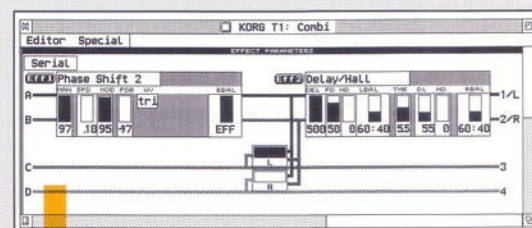
POLYFRAME MODULE FOR THE KORG T1, T2, T3

© 1991 Udo Hilwerling

This Module allows the editing and data management of all Korg T1, T2 and T3 data, incl. the EX versions.

PM-T features

- fast editing of Drumkits in the Program editor, and of Programs in the Conbi editor, with simultaneous editing of the 4 Drumkits in the drum editor
- Effects editing also possible in the Conbi and Sequencer editors
- automatic selection function marks the Programs being used
- LISTEN TO MIDI: uses the Korg's keyboard to set the keyboard tracking and velocity windows



KORG T AND M SERIES EFFECTS EDITOR

PM-WS

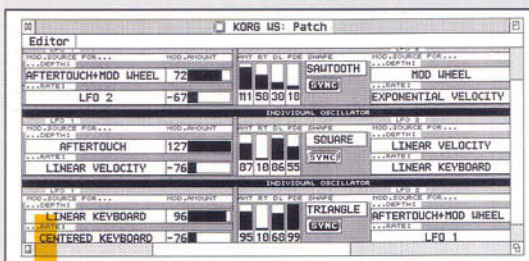
POLYFRAME MODULE FOR THE KORG WAVESTATION

© 1991 Udo Hilwerling

This Module allows the complete editing and data management of the Korg Wavestation.

PM-WS features

- wave sequences individually copyable in a library
- sequential wave sequence editor with graphic display of crossfades
- fully automatic control over the free wavestep memory
- dynamic Performance editor
- Patch editor, selection possible via the Memory Manager or Performance editor with graphic selection of the envelope macros
- wave sequence editor with direct selection via Patch editor or Memory Manager
- Microtune editor
- Multimode Setup editor
- System Setup editor
- full support for Wavecards and Soundcards



KORG WAVESTATION PATCH / EDITOR

PM-UNI

POLYFRAME MODULE FOR UNIVERSAL APPLICATION

© 1991 Michael Haydn

PM-UNI allows the free definition of adoptions for virtually all MIDI devices, from a simple universal „Dump Utility“ to a complete editor environment. Allows, for instance, the automatised of mixing desks, effects devices etc., plus the editing and data management of exotic devices for which no software exists: all this integrated within the POLYFRAME concept.

PM-UNI features

- any number of adoptions can be used simultaneously
- Adaption editor with its own window, giving you WYSIWIG (What You See Is What You Get) control over the Memory Manager structure
- automatic structurisation of the Memory Manager when defining data types and banks
- LISTEN TO MIDI: eases the definition of MIDI messages
- automatic adoption of manufacturer-specific MIDI protocols (eg. Roland)
- free configuration of editor windows for each data type
- from your own user-surface using objects such as faders, switches, knobs, envelopes (using any number of points), numerical values, text, rectangles
- objects may be placed anywhere and sized
- editors may be used as generators of universal MIDI messages

POLYFRAME Modules Summary (May 1991)

PM-UNI Universal Module for user-definition of editors

PM-SY for Yamaha SY / TG 77, (SY / TG 55 under development)

PM-DX for Yamaha DX / TX 7, TF 1, DX 7 II, TX 802

PM-T for Korg T 1, T 2, T 3

PM-WS for Korg Wavestation

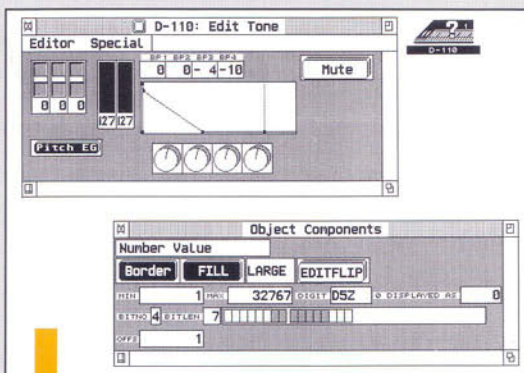
PM-M for Korg M 1, M 1 R, M 1 REX, (M 3 R under development)

PM-VFX for Ensoniq VFX (under development)

PM-U for Roland U 20, U 220 (under development)

PM-PRO for Emu Proteus (under development)

PM-MX for Oberheim Matrix 1000, -6, 6 R (under development)



FREELY DEFINABLE EDITOR ADAPPTIONS

X-ALYZER

DX LIBRARY & EDITOR DX-TO-SAMPLE TRANSFORMER FOR ATARI ST-SERIES

© 1989 Wulf Harder, Jens Rebaum, Bernd Peeters, Gerhard Lengeling

X-ALYZER V.2.0 is a program/sound package, which manages DX 7 sounds in a complete library with fast access similar to a professional data bank: No need to save sounds in banks of 32. Search and Sort functions support specific sound selection: the right sound at the right moment. Sounds are sorted according to physical criteria and can directly be transmitted via MIDI to a sampler. The program completely simulates the

DX 7, DX 7 II and TX 802 architectures. Every single parameter is supported. Five pages allow the graphical manipulation of all Performance data Micro Tuning and fractional scaling parameters. Complete representations of the DX 7, DX 7 II and TX 802 device architecture. All functions including cartridge access can be remote controlled by the computer. There are of course all sorts of editing

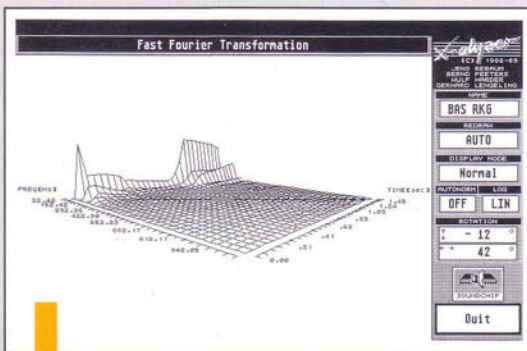
possibilities. The EASY PAGE developed by C-LAB provides an „analog“ desktop which makes programming really easy. An intelligent random generator facilitates the automatic creation of sounds that you can use musically.

Library

- direct fast access to thousands of sounds with Scroll and Shift commands. Separate library for those sounds contained within the device such as the ROM Sounds for the TX 802.
- virtual memory management allows very large libraries.
- Alphabetical sorting of libraries.
- Supports all cartridges.
- Easy configuration of an individual sound selection from a comprehensive library: Copy, Shift, Insert and Delete at any point.
- Search and Sort functions, automatic sorting of e.g. „Bass“ sounds, automatic deletion of duplicates.
- SPEC-SORT sorts DX 7 sounds according to a Fourier spectral and envelope analysis.
- 3 dimensional diagram of the sound spectrum (Fourier transformation) to illustrate harmonic structures.



X-ALYZER MAIN PAGE



FAST FOURIER-DISPLAY

EXPLORER 32

MT-32, MT-100, E-10, E-20, D-5, D-10, D-20, D-110, D-50, D-550

LIBRARY & EDITOR FOR ATARI ST-SERIES

© 1989 Michael Haydn

EXPLORER 32 2.0 is a universal LIBRARIAN & EDITOR program for all Roland LA-synthesizers. All types of data can be transmitted between the various devices. Extensive graphic editors allow access to all parameters. A new type of "Soft-Scrolling" editor provides optimum clarity without having to switch screens or windows.

- completely compatible with Roland MT-32, MT-100, D-5, D-10, D-20, D-110, D-50 and D-550.

- direct access to thousands of sounds with Scroll and Shift commands, Search and Sort functions (even for similar sounds).
- TCS (Tonal Characteristics Search): 32 characteristics are assigned to each library entry by sound analysis, another 32 can be freely named and set. Diverse search functions allow instantaneous finding of sounds by means of an arbitrary combination of various characteristics.
- nine "slider-editors" for Tones, Timbres, Patches, Drums, System, Level/Pan and LC-display; full editing possibilities including reverb and system settings, graphically editable envelopes, LFOs and EQ frequency response.
- five random functions allow specific creating, mixing and cross fading of sounds.
- print-outs of Libraries, Tones, Timbres, Patches and Drums.
- sounds can be transferred effectively between all types of devices.
- a library can contain the sounds of all LA-synthesizers simultaneously, automatic recognition and conversion are carried out with only one computer key.
- possibility of inserting D-50 bank files from other editors directly into the library.
- EXPLORER 32 files are CREATOR compatible and can be transmitted from there to the LA synthesizers in the form of System Exclusive data.
- Integrated mini-sequencer is CREATOR compatible.

DX to sample conversion

- Conversion of DX 7 sounds to digital waveforms with the possibility of graphic and acoustic representation via the Atari monitor and direct digital transmission to a sampler without using DX 7.
- Many samplers supported.
- Graphic editors for Performances, Fractional Scaling, Microtuning and System Data. Intelligent and transparent performance management for DX 7 II and TX 802 (Queries as to which sound is located in which Performance is possible).
- Performances can be saved to disk as CREATOR "SEQ" files.

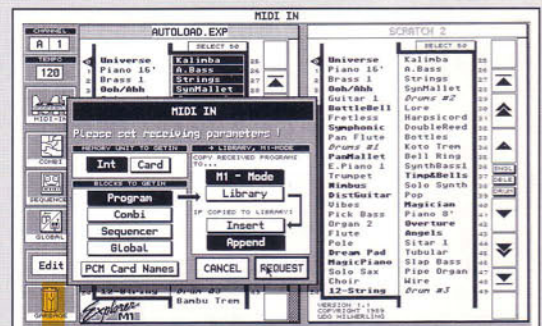
EXPLORER M 1

M-SERIES LIBRARY & EDITOR FOR ATARI ST-SERIES

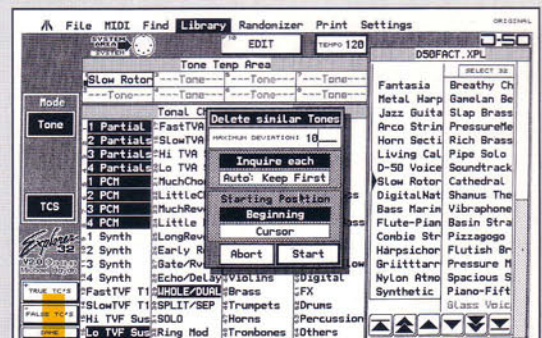
© 1989 Udo Hilwerling

The EXPLORER M1 allows convenient programming of the Korg M1 Workstation. In the LIBRARY mode, very extensive sound banks can be managed; in the so-called "M1 mode" the entire memory is loaded in one piece into the computer. EXPLORER M1 offers numerous search functions (singles, doubles, drums, etc.); formatted list printing (Library M1 Mode) with pre-selection also automatic; data reduction; support for all cards incl. PCM cards and very fast sort routines. The consistent desktop offers various graphic editing aids.

- SOUND ATTRIBUTES facilitate sorting and fast spotting of various sound categories. Multisounds can be marked and sorted out. Eight "snapshots" can be taken of various multi-sounds.
- COPY, SWAP and CLIPBOARD functions offer convenience even with extensive libraries.
- M1 MODE: loads the entire memory into the computer in one unit. The helpful and informative desktop offers numerous graphic editing aids.
- COMBINATION MANAGER facilitates simultaneous overview of programs and combinations. The assignment of timbres as well as other important functions can be carried out without using the editor.
- SEQUENCER EDIT
- COMBINATION EDIT
- EFFECT EDIT
- DRUM EDIT: All four drum kits can be edited simultaneously.
- RANDOMIZER: pre-definable random generating or altering of existing sounds.
- FILE SELECTOR BOX: Integral Accessory, can be used for any GEM program.



EXPLORER M 1 MAIN PAGE



LIBRARY PAGE