

**YAMAHA**



# **Data Filer**

**Owner's Manual**

## Contents

---

<b>Installing the QY Data Filer</b>	1
• For Windows users	1
• For Macintosh users	2
<b>What is the QY Data Filer?</b>	3
<b>How to start the QY Data Filer</b>	5
<b>QY Data</b>	9
• Saving QY data to the Computer	9
• Transmitting data saved in the computer to the QY70	11
<b>SMF Data</b>	15
• Saving QY70 Song data as SMF (Standard MIDI File) data	15
• Transmitting SMF data to the QY70	18
<b>QY Control</b>	20
<b>Error Messages</b>	22
MIDI Manager (For Macintosh Users)	25

- *The software and this owner's manual are the exclusive copyrights of Yamaha Corporation.*
- *This owner's manual assumes that you are already familiar with basic Windows / Macintosh operation. If you are not, please refer to the owner's manual which came with your Windows / Macintosh software before using QY Data Filer.*
- *The screen displays as illustrated in this owner's manual are for instructional purposes, and may appear somewhat different from the screens which appear on your computer.*
- *Copying of the software or reproduction of this manual in whole or in part by any means is expressly forbidden without the written consent of the manufacturer.*
- *Yamaha makes no representations or warranties with regard to the use of the software and documentation and cannot be held responsible for the results of the use of this manual and the software.*
- *MS-DOS and Windows are the registered trademarks of Microsoft Corporation.*
- *Macintosh is the registered trademark of Apple Computer, Inc.*
- *The company names and product names in this Owner's Manual are the trademarks or registered trademarks of their respective companies.*
- *Copying of commercially available music sequence data files is strictly prohibited except for your personal use.*

# Installing the QY Data Filer

To use the QY Data Filer, follow the instructions below to install the Data Filer software from the floppy disk (QY Data Filer) to your computer.

## For Windows Users

To install the QY Data Filer for Windows, the following system is required:

Operating System	Windows 95 or Windows 3.1
CPU	80486 sx/33MHz or faster
Memory	8MB or more
Hard Disk	3MB or more
Display	640 x 480 dots, 256 or more colors

- 1 Insert the "QY Data Filer for Windows" floppy disk into your computer's disk drive.
- 2 If you are using Windows95, click the START button, then click the "Run".  
(If you are using Windows3.1, select "Run" from the Program Manager's File menu.)
- 3 Use the keyboard to enter the name of the floppy drive holding the floppy disk, and the file name (setup.exe).
  - If you are using an IBM-PC/AT compatible computer, enter "A:\setup.exe" and click "OK".
  - If you are using an NEC9801/9821 series computer, enter "B:\setup.exe" and click "OK".

From this point, follow the commands that appear on your computer's display to carry out the installation operation.


### ■ NOTE

- If you are using Windows 3.1 or Windows95, it will be necessary to install the "MIDI driver" before you use the QY Data Filer as well as installing the QY Data Filer itself. Refer to the "Owner's Manual" on page 19 to install the MIDI driver.

## For Macintosh Users

To install the QY Data Filer for Macintosh, the following system is required:

Operating System	Mac OS System 7.1 or later
CPU	68030 or faster
Memory	3MB or more
Hard Disk	3MB or more
Display	256 or more colors

- 1** Insert the “QY Data Filer for Mac” floppy disk into your computer’s floppy disk drive.
- 2** After the icon for the floppy disk appears on your monitor, double click on the floppy icon.  
  
The “QY Data Filer for Mac” icon and the “MIDI Manager” folder are displayed.
- 3** Drag the “QY Data Filer For Mac” to the hard disk to copy the file.
- 4** Open the “MIDI Manager” with a double click, then drag the entire contents of the “MIDI Manager” folder onto the Macintosh System folder icon ().  
  
The files dragged to the system folder will automatically be copied into the proper folders. If a dialog box appears asking for confirmation, click “OK”.
- 5** Restart your Macintosh computer.

This completes installation of the QY Data Filer.

**■ NOTE**

- About the “MIDI Manager”, refer to page 25.

# What is the QY Data Filer?

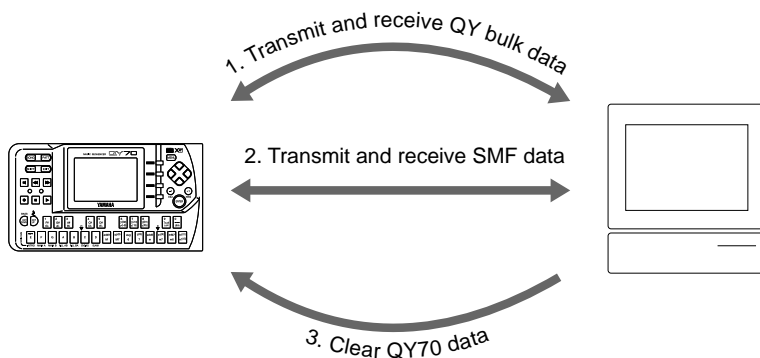
The QY Data Filer is a file manager that allows you take data created by the QY70 and save it in your computer. Before you can use the QY Data Filer, you must install the software, and connect the QY70 to your computer (refer to the "Owner's Manual" on page 16).

The QY Data Filer can perform the following three functions depending upon how you use it:

1. Data created by the QY70 can be saved to your computer as QY bulk data. Also, QY bulk data saved in your computer can be transmitted to the QY70.
2. SMF song data files such as XG or GM song data can be transmitted from the computer to your QY70 to be played back on the QY70. Also, data created by the QY70 can be saved to your computer as an SMF song.
3. Song/Style data in the QY70 can be cleared via the computer.

## ■ NOTE

- *The QY Data Filer is an application designed specifically for the QY70. It cannot be used with any other devices.*
- *If you are using Windows 3.1 or Windows95, it will be necessary to install the "MIDI driver" before you use the QY Data Filer. Refer to the "Owner's Manual" on page 19 to install the MIDI driver.*



## 1. Transmit and receive QY bulk data

### QY70 → Computer

- All of the data in the QY70 can be saved to the computer as a bulk file.

### Computer → QY70

- A bulk file saved in the computer can be transmitted to the QY70.
- Single Song data within a bulk file saved in the computer can be transmitted to the QY70.
- Single User Style data within a bulk file saved in the computer can be transmitted to the QY70.

## 2. Transmit and receive SMF data

### QY70 → Computer

- Song data in the QY70 can be converted to SMF (Standard MIDI File) data and saved to the computer.

### Computer → QY70

- SMF (Standard MIDI File) data saved in the computer can be transmitted to the QY70.

## 3. Clear QY70 data

### Computer → QY70

- The QY70's Song name list can be viewed on the computer display, single or all Songs in the list can be cleared with the computer.
- The QY70's User Style name list can be viewed on the computer display, single or all User Styles in the list can be cleared with the computer.

# How to start the QY Data Filer

## **1 Start the QY Data Filer.**

After installation (refer to page 1) and connection (refer to the "Owner's Manual" on page 16) are completed, follow the instructions below to start up the QY Data Filer.

### **• If you are using Window95**

Click the "START" button, then click "QY Data Filer for Windows", which is located in the "QY Data Filer" under the Programs menu.

### **• If you are using Windows3.1**

Double click the "QY Data Filer for Windows" icon which is located in the "QY Data Filer" group window.

### **• If you are using a Macintosh**

Double click the "QY Data Filer for Mac" icon.

#### **■ NOTE**

- If you use the QY Data Filer on a Macintosh System, open the "Chooser" in the "Apple Menu" and turn off "Apple Talk".

#### **■ CAUTION**

- If the MIDI Driver cannot be used with your computer, the following message will be displayed.

**"The selected MIDI device is in use. Quit any applications using the device."**

→ Click "OK", then quit all other MIDI applications (sequencer software, etc.) that use the MIDI driver, and start the QY Data Filer once again.

**"Can't find the MIDI device. Confirm the MIDI device settings."**

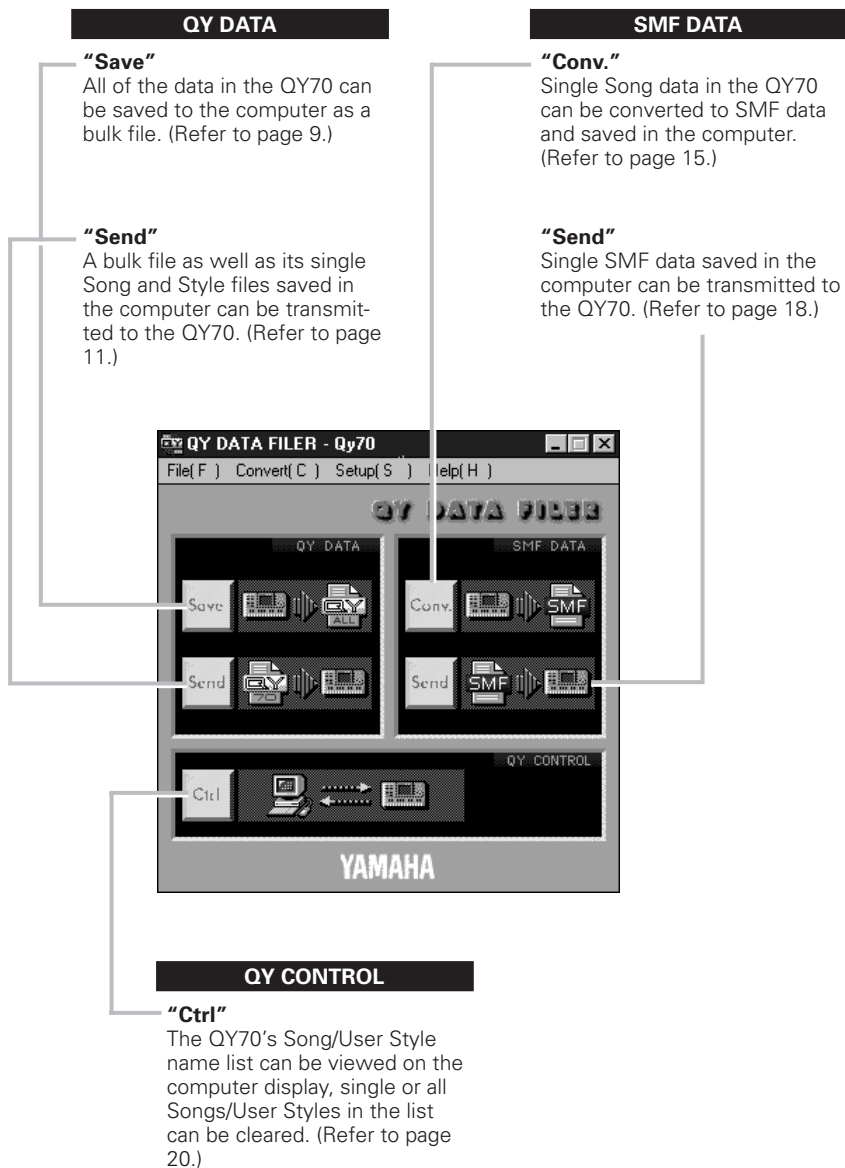
→ The MIDI driver is not properly installed. Refer to the "Owner's Manual" on page 19 and install the MIDI Driver.

#### **■ CAUTION**

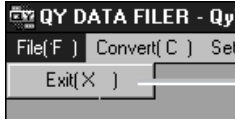
- If the QY70 is not properly connected to your computer, "Data transfer failed. Confirm QY70 connections (HOST SELECT switch, etc.)" dialog box will be displayed. Properly connect the QY70, confirm the HOST SELECT switch position, and start the software again.

## 2 The top display.

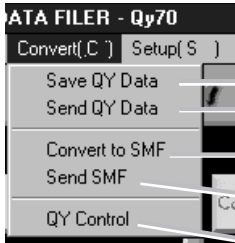
When you start the QY Data Filer, the following display will appear. This is referred to as the “top display”.



## The Data Filer Menu display



Quits the QY Data Filer application.



Same as the "Save" for QY data on the top display.

Same as the "Send" for QY data on the top display.

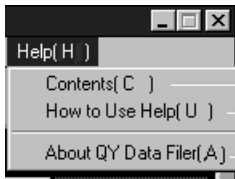
Same as the "Conv." for SMF data on the top display.

Same as the "Send" for SMF data on the top display.

Same as the "Ctrl" on the top display.



Selects the MIDI driver that is required to exchange data (Bulk Dump) between the QY70 and the computer.



Opens the Help file's "Contents".

Opens the "How to Use Help" file.

Displays the QY Data Filer's version information, etc.

### NOTE

- Setup and Help menus are available only if you are using Windows.

## About the Device Setup (for Windows only)

This procedure lets you select the required MIDI driver that is necessary in order for the QY Data Filer to exchange MIDI data (Bulk Dump) between the QY70 and the computer.

### 1 Select “Device Setup” from the “Setup” Menu.

The “MIDI Port Setup” dialog box is displayed.



### 2 Select the MIDI Driver.

Click on each of the “▼” buttons for the “MIDI IN Port” or “MIDI OUT Port”, select the MIDI driver from the drop-down list that is displayed.

- **If the QY70’s TO HOST jack is connected directly to the computer’s serial port.**

If you are using Windows95

Select the “Yamaha CBX Driver” for the “MIDI IN Port”, and the “Yamaha CBX A Driver” for the “MIDI OUT Port”.

If you are using Windows3.1

Select the “Yamaha CBX-T3 Driver” for both the “MIDI IN Port” and “MIDI OUT Port”.

- **If the QY70’s MIDI ports are connected to the computer via a MIDI interface.**

For both the “MIDI IN Port” and “MIDI OUT Port”, select the MIDI driver that is compatible with the MIDI interface you are using.

### 3 Click “OK”.

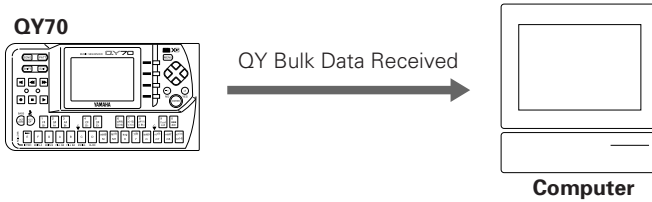
#### ■ NOTE

- To select the MIDI driver, the required MIDI driver needs be previously installed.

# Q Y D a t a

## Saving QY data to the Computer

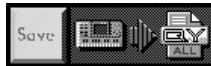
All Song data, User Style data created by the QY70 can be received as “Bulk Data” and saved in the computer (QY Bulk Files are written to the computer).



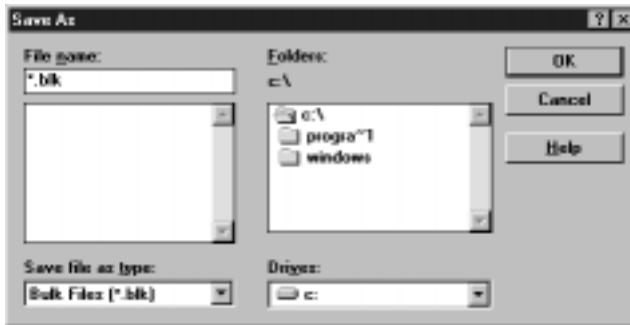
### ■ NOTE

- It is not necessary to perform a bulk dump operation from the QY70.

**1** Click the QY Data “Save” icon on the top display.



The “Save As” dialog box is displayed.



\* If you are using a Macintosh, the typical Macintosh “Save As” dialog box will appear.

**2** Enter the file name and select the directory for where you want to save the bulk file.

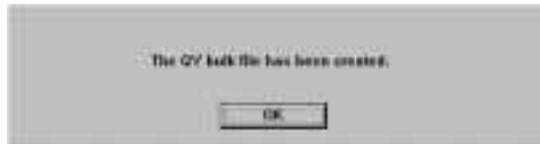
**3** Click “OK” or “Save”.

The “Ready for data transfer” message will be displayed.



**4** Click “Start” and the bulk data from the QY70 will be transmitted to the computer.

When reception is complete, “The QY70 bulk file has been created” message is displayed.



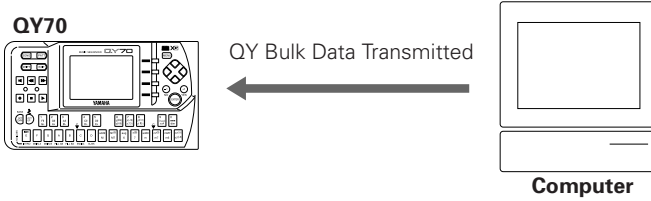
**5** Click “OK” to return to the top display.

**■ NOTE**

- If you attempt to operate the QY70 before returning to the top display, the “Now Bulk Mode” message will appear on the QY’s LCD and the operation will be rejected.

## Transmitting data saved in the computer to the QY70

Data saved in the computer can be transmitted as bulk data to the QY70.-----



### ■ NOTE

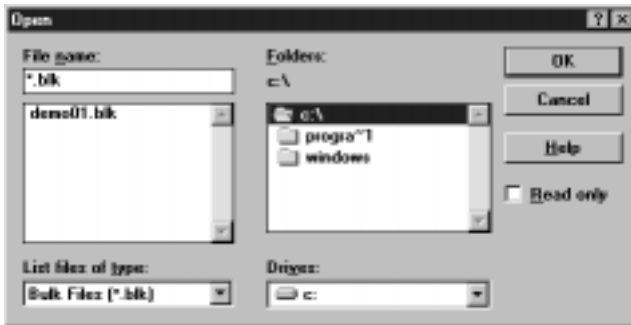
Pay attention to the following points when you transmit bulk data from the computer.

- Stop any playback or recording operations on the QY70.
- To transmit data to the QY70, change the QY70's display to the SONG play display or the PATTERN play display before transmitting data.

### 1 Click the QY Data “Send” icon on the top display.



The “Open” dialog box is displayed.



\* If you are using a Macintosh, the typical Macintosh “Open” dialog box will appear.

**2 Select the Bulk File to be transmitted.**

**3 Click “OK” or “Open”.**

The following dialog box is displayed to select the transmit type.



<b>All</b>	All data within the selected bulk file will be transmitted.
<b>One Song</b>	A single QY70 Song file within the selected bulk file can be transmitted one at a time.
<b>One Pattern</b>	A single QY70 User Style within the selected bulk file can be transmitted one at a time.

Select the transmit type and click “OK”.

**■ NOTE**

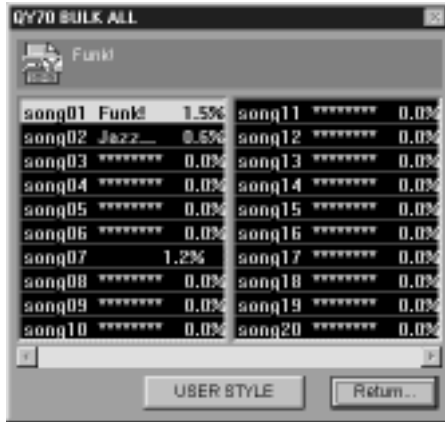
- If you select “All”, all Songs, all User Styles, as well as system setup data in the QY70 will be overwritten (erased) with data transmitted by the computer.

**4 -1 If you select “All” in step 3 .**

If “All” is selected in step 3 above, the following dialog box will be displayed. Click “Return” if you want to return to the top display.



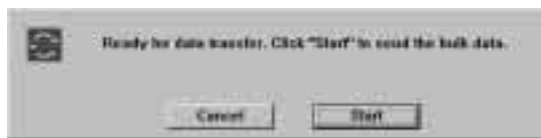
Click “Show list” and a list of the songs to be transmitted will be displayed. Confirm the contents of the list.



Click “USER STYLE” to confirm the contents of the User Styles to be transmitted.

Click “Return” to return to the previous display shown on the bottom of page 12.

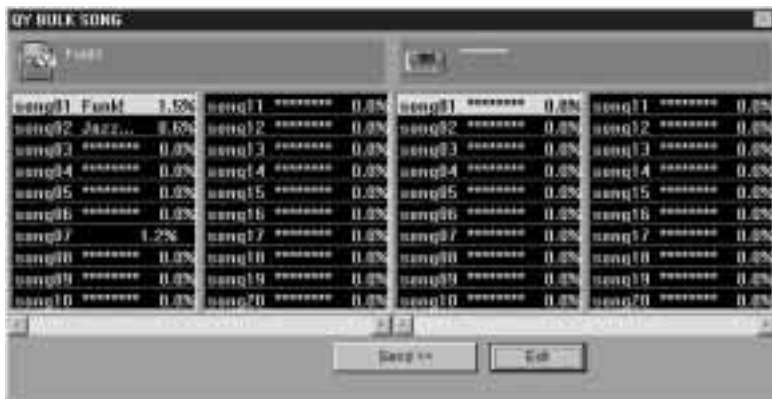
Click “Don’t show” on the display shown on the bottom of page 12, and the “Ready for data transfer” message will be displayed. Move on to step **5** .



**4 -2 If you select “One Song” or “One Pattern” in step 3 .**

If “One Song” or “One Pattern” is selected in step **3** , the following dialog box will be displayed.





Select the Song/User Style file to be transmitted in the left box, then select the destination (QY70's Song/User Style number) in the right box.

**NOTE**

- If the destination Song/User Style number contains a Song or User Style, the bulk transmission from the computer will overwrite that data (erase).

Click "Send", and the "Ready for data transfer" message will be displayed. Move on to step **5**.

**5 Click "Start" in the "Ready for data transfer" message box, and bulk data transmission will begin.**



When transmission is complete the "Transmission complete" message is displayed.

**6 Click "OK" to return to the top display.**

If you select "One Song" or "One Pattern" in setp **3**, the dialog box shown in step **4**-2 will be displayed again to transmit another Song/User Style. Click [Exit] to return to the top display.

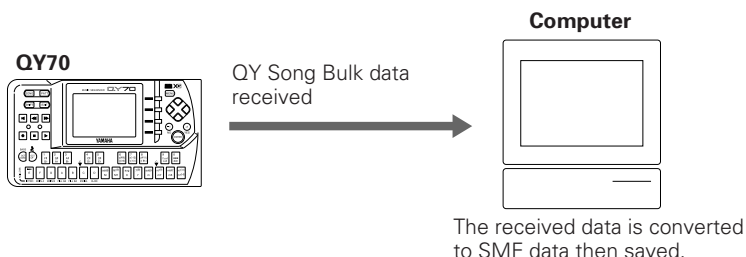
**NOTE**

- If you attempt to operate the QY70 before returning to the top display, the "Now Bulk Mode" message will appear on the QY's LCD and the operation will be rejected.

# SMF Data

## Saving QY70 Song data as SMF (Standard MIDI File) data

Song data created by the QY70 is received by the computer, converted to SMF data, and then saved.



### ■ NOTE

- If you want to save a song contains data in the pattern track (Pt) and chord track (Cd) as SMF data, execute the "Expand Backing" job previously.

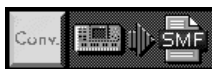
### What is SMF?

SMF (Standard MIDI File) was developed to allow the exchange of a common type of song data between different types of sequencers. Many software/hardware manufactures make SMF compatible sequencers.

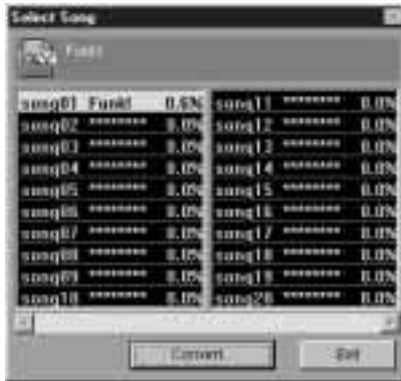
By saving data with the QY Data Filer to SMF data, you can use data created by the QY70 in normal SMF sequencers for playback, and edit the data as well.

### 1 Click the SMF Data "Conv." icon in the top display.

The "Select Song" dialog box is displayed.



### 2 Click on the song you want converted to SMF data.



### 3 Click “Convert”.

The following dialog box appears and asks you if you want to add an XG voice data header to the SMF file.




---

#### **Add to SMF**

An XG voice data header will be applied to the SMF data. If the SMF data is saved with an XG header, a MIDI message that sets up the tone generator's voices will be attached to the top (before the start of the song) of the SMF data. In this case, if you use the SMF data with another system (sequencer + XG tone generator) the same voice settings that were used when the song was recorded, will be faithfully reproduced.

---

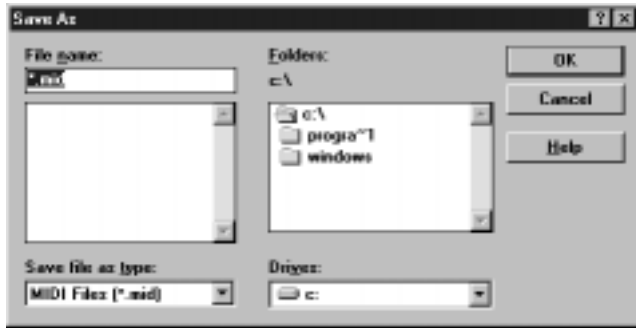
#### **Don't add to SMF**

The XG voice data header will not be applied to the SMF data. If the data will not be played on an XG tone generator, it is not necessary to attach an XG header to SMF data.

---

Select whether the header is to be attached to the SMF data or not, and click “OK”.

The “Save As” dialog box will be displayed.



\* If you are using a Macintosh, the typical Macintosh “Save As” dialog box will appear.

**4 Enter the SMF data’s file name and select the directory for where you want to save the data.**

**5 Click “OK” or “Save”**

The “Ready for data transfer” message will be displayed.



**6 Click “Start”**

Song data will be received. When reception is complete, the song data will be automatically converted to SMF data.



When conversion is complete, “The Standard MIDI File has been created” message is displayed.

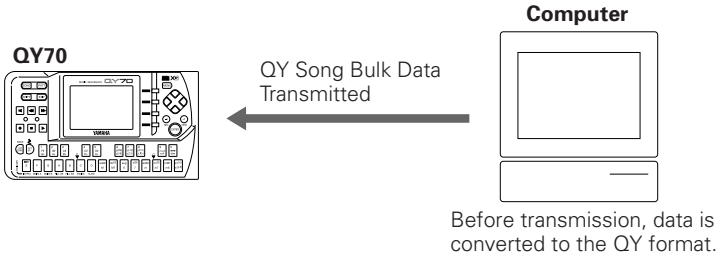
**7 Click “OK”, and you will be returned to the top display.**

**NOTE**

- If you attempt to operate the QY70 before returning to the top display, the “Now Bulk Mode” message will appear on the QY’s LCD and the operation will be rejected.

## Transmitting SMF data to the QY70

The SMF data saved in the computer is converted to the QY70's format, and then transmitted to the QY70.



### ■ NOTE

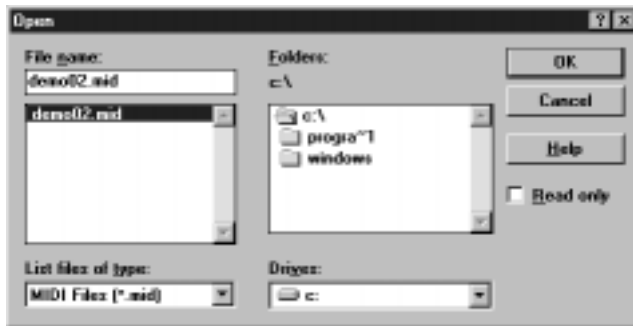
When Song data is transmitted from the computer, pay attention to the following points.

- Stop Record and Playback operations on the QY70.
- If you transmit SONG data to the QY70, change the QY70's display to the SONG/PATTERN play display before transmitting data.

### 1 Click the SMF Data “Send” icon on the top display.



The “Open” dialog box is displayed.



\* If you are using a Macintosh, the typical Macintosh “Open” dialog box will appear.

**2** Select the SMF data you want to transmit with a click.

**3** Click “OK” or “Open”

The “Select Song” dialog box is displayed.

**4** Click the destination song number to select it, then click “Send”.

**5** Click “Start” when the “Ready for data transfer” message is displayed.

The SMF data is converted to the QY70’s format, and transmission starts.



**NOTE**

- If the destination song number already contains a song, that song will be overwritten (erased) with data that is transmitted from the computer.

When transmission is complete, the “Transmission complete” message is displayed.

**6** Click “OK” and you will be returned to the “Select Song” dialog box.

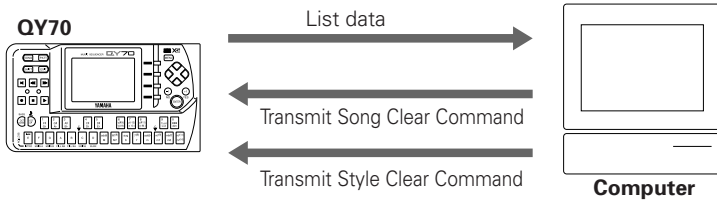
If you want to transmit another SMF data to the QY70, click “Select File”. Clicking “QY Control” you can move to QY Control (refer to page 20). Clicking “Exit” you will be returned to the top display.

**NOTE**

- If you attempt to operate the QY70 before returning to the top display, the “Now Bulk Mode” message will appear on the QY’s LCD and the operation will be rejected.

# QY Control

The QY70's Song/Style name list can be viewed on the computer display, single or all Songs/User Styles on the list can be cleared.



**1** Click the QY Control “Ctrl” icon in the top display.



The “QY Control” dialog box opens and the QY70's Song list is displayed.



## 2 Clear a Song or Style.

### • To Clear a Song

Click to select a Song in the Song list, then click “CLEAR SONG” to erase the song.

Click on “CLEAR ALL SONGS” to erase all songs (01-20).

### • To Clear a User Style

Click “USER STYLE” and the QY70’s User Style list (U01-U64) is displayed.



Click to select a Style, click on “CLEAR USER STYLE” and the selected style will be erased.

Click on “CLEAR ALL USER STYLES”, and all User Styles (U01-U64) will be erased.

## 3 Click “Exit” and you will be returned to the top display.

### ■ NOTE

- If you attempt to operate the QY70 before returning to the top display, the “Now Bulk Mode” message will appear on the QY’s LCD and the operation will be rejected.

# Error Messages

## ■ “The selected MIDI device is in use. Quit any applications using the device.”

When the QY Data Filer starts up and the MIDI driver is currently being used by another application, this message is displayed.

Click “OK”, quit any applications that are using the MIDI driver, and start the QY Data Filer again.

## ■ “Can’t find the MIDI device. Confirm the MIDI device settings.”

Refer to the procedures on page 19 in the “Owner’s Manual”, install the MIDI driver, and properly select the COM port, etc.

## ■ “Data transfer failed. Confirm QY70 connections (HOST SELECT switch, etc).”

Confirm the following points and try the operation again.

### • Is the QY70 properly connected to the computer?

Follow the instructions on page 16 in the “Owner’s Manual” and make the proper connections.

### • Is the QY70’s AC adaptor connected?

Follow the instructions on page 11 in the “Owner’s Manual” and make the proper connections.

### • Is the QY70’s POWER switch turned OFF?

Switch the POWER ON.

### • Is battery power low?

Replace the old batteries with a fresh set of batteries.

### • Is the QY70’s HOST SELECT switch properly set?

Follow the instructions on page 17 in the “Owner’s Manual” and make the proper settings.

- **Is the device properly set up?**

Follow the steps in the “About the Device Setup” section on page 8 and confirm that the proper MIDI driver is selected.

- **“Data transfer interrupted. Confirm QY70 connections”**

Confirm the following points, switch the QY70’s power off, then on again, and try the operation once again.

- **Is the QY70’s AC adaptor connected?**

Follow the instructions on page 11 in the “Owner’s Manual” and make the proper connections.

- **Is the QY70’s POWER switch turned OFF?**

Switch the POWER ON.

- **Is battery power low?**

Replace the old batteries with a fresh set of batteries.

- **Is the QY70 property connected to the computer?**

Follow the instructions on page 16 in the “Owner’s Manual” and make the proper connections.

- **Is the QY70’s HOST SELECT switch properly set?**

Follow the instructions on page 17 in the “Owner’s Manual” and make the proper settings.

- **“Data transfer is not possible in the QY70’s current mode. Press the [EXIT] button, etc., and set the QY70 to a mode that allows data transfer.”**

Confirm the following points and try the operation again.

- **Is the QY70 currently showing the SONG play mode/PATTERN play mode display?**

Return to the SONG play mode/PATTERN play mode display.

- **Is the QY70 currently in the middle of Recording, Playback or, in Record Standby?**

Press the QY70’s [■] button, and stop play or record operations.



- **“An error has caused the QY Data Filer to terminate. Restart your computer, and start the QY Data Filer again.”**

Due to some error, the QY Data Filer has abnormally quit operation. After restarting the computer, start the QY Data Filer again.

- **“Could not create the bulk file. Disk is full.”**  
or  
**“Could not create the SMF file. Disk is full.”**

The QY bulk file or SMF file could not be saved to the disk because the disk is full.

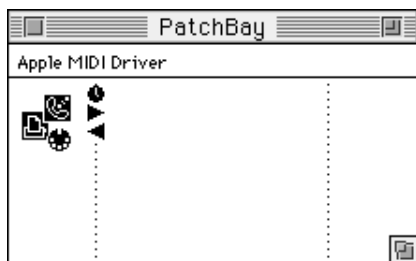
## MIDI Manager

MIDI Manager is an Apple system extension file which handles MIDI information. With it, you can determine the serial port for the exchange of music data in real-time with various MIDI software. PatchBay lets you determine how MIDI Manager is configured for the Apple MIDI driver and the MIDI software.

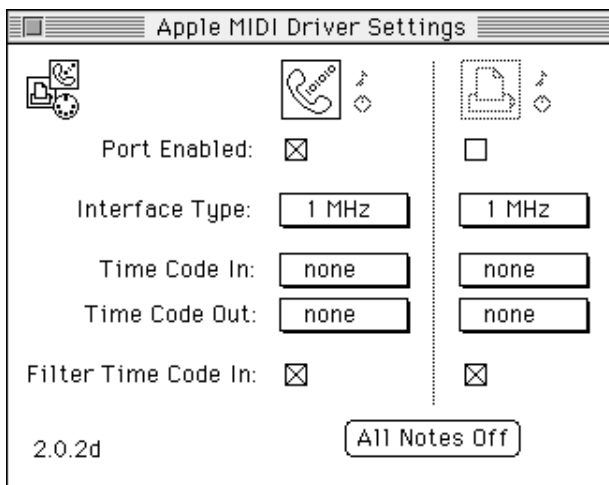
Normally the Apple MIDI driver will automatically load as part of the QY Data Filer start up process, which means you won't need to perform any specific operation unless you plan to change the serial port connection. To change the serial port connection, please refer to the steps as outlined below.

### ● Setting the Serial Port

- 1 From the Apple pull-down menu, select "PatchBay". A window will appear indicating which interfaces are connected in relation to the MIDI Manager.

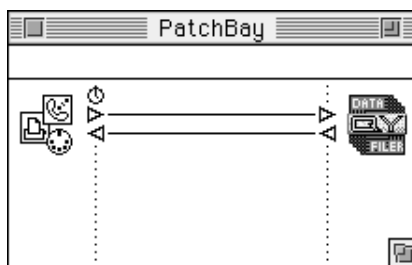


- 2 Double-click on the Apple MIDI Driver icon. Then select which port you want to use and set the Interface Type. (In most cases 1MHz will be appropriate.)



- 3** After starting up QY Data Filer, you can open the PatchBay window to confirm how QY Data Filer is configured with the Apple MIDI Driver.

You can also configure another sequencer program with QY Data Filer or determine various other settings.



- \* When you want to use the QY Data Filer, open the "Chooser" in the Apple menu and turn off Apple Talk.
- \* To access information about PatchBay, from the Apple menu, select "About PatchBay".
- \* To run QY Data Filer on a Macintosh IIx or certain Quadra models requires that the "Serial Switch" be in the Control Panels folder, since the serial port configuration for these computers is different from other Macintosh models.

When you copy the entire contents of the "MIDI Manager" folder in the "QY Data Filer" floppy disk to the Macintosh System folder (as described on page 2), the "Serial Switch" will be installed automatically into the Control Panels folder.

- \* If you are using a Performa series computer with an internal modem installed, select the printer port in step **2** of the above procedure. In this particular computer, even if the Modem port is selected in the window, the QY Data Filer cannot transfer data via the Modem port.

■ **NOTE**

- "Cache Switch" is necessary for configuring the systems of some Quadra models. You will find "Cache Switch" in the System disk called "Tidbits". Copy it into the System Folder. After copying it into the System Folder, pull down the Apple menu and select "Control Panels". Set the serial port of the "Ilfx Serial Switch" to "Compatible". If you are using a Quadra with the different serial port configuration, set the "Cache Switch" to "More Compatible". When using such a Quadra and the screen message "Cannot use with this Macintosh" appears, the above settings will not be required.



